

LEMON LILY ADVENTURE GUIDE



WE NEED YOUR HELP!

BE A LEMON LILY LEADER!





I WANT TO BE A LEMON LILY LEADER!

MY NAME

DATE

If you want to be a **LEMON LILY LEADER**, this **ADVENTURE GUIDE** will be a big help!

Here are a few things you need to know before you get started:

LEMON LILY - A beautiful wildflower (*lilium parryi*) that can grow only in Idyllwild and a few other places on earth.

A long time ago, people visited Idyllwild and discovered how beautiful the Lemon Lilies were. They wanted to have them. So they dug up the Lemon Lilies and took them far away from here. The Lemon Lilies they took most certainly died. The only ones that were left were up high in the mountains where the bulb hunters couldn't find them.

Today, the people of Idyllwild are restoring the Lemon Lily and planting them along the creeks where they once grew.

LEADER - Someone who does the right thing, sets a good example for others, and protects things that need to be protected.

As you complete your **ADVENTURE GUIDE**, you'll visit Idyllwild County Park's **NATURE CENTER**. And you'll learn how to protect the Lemon Lily and other things in Nature.

LEARN ABOUT THE LEMON LILY AND THE FESTIVAL —→

THE LEMON LILY FESTIVAL

When the people in Idyllwild learned what had happened to the precious Lemon Lilies, they decided that they wanted to see them growing again along the creeks as they once did over 100 years ago.

So in 2010, they bought Lemon Lilies from a native plant nursery and started to plant them along the creeks.

They collected the seeds from the Lemon Lilies that still grew high in the mountains. They planted the seeds in pots and kept them safe inside their houses. And baby Lemon Lilies started to grow!

When the baby Lemon Lilies are big enough, they will be planted along the creeks, too.



EVERY YEAR, THE LEMON LILY RESTORATION TEAM PLANTS LEMON LILIES ALONG THE CREEKS, AND YOU ARE INVITED TO COME!
GO TO LEMONLILYFESTIVAL.COM FOR PLANTING SCHEDULES AND LOCATIONS



**THIRD WEEKEND
IN JULY**

**YOU ARE INVITED
TO COME
CELEBRATE
THE LEMON LILY!**

LEMON LILY FESTIVAL.COM

The people in Idyllwild were so happy when they knew that Lemon Lilies would grow along the creeks again!

Artists drew picture of them and created works of art to honor them. Writers wrote stories about them. Photographers took pictures of them. Musicians wrote songs about them. People made films about them.

So the people of Idyllwild decided to have a festival to celebrate the Lemon Lily and invite everyone to come and have fun and see the Lemon Lilies growing along the creeks again!

There is a Pioneer Town with music and fun for everyone. There are arts and crafts to honor the beautiful Lemon Lily. And there are hikes to see the Lemon Lilies blooming in the wild where they belong!

HOW LEMON LILIES GROW

A Lemon Lily starts its life as seed that sends green shoots into the air and roots into the soil. Under the soil, it forms a **bulb**.

The bulb gets its food from the nutrients in the soil around it and then it starts to make **leaves**. The leaves get food from the rays of the sun and the Lemon Lily grows.

When the bulb is big enough, it grows a **stem** and beautiful **flowers**! The flowers make nectar that smells wonderful to us – and to **pollinators**, like bees and moths and butterflies and hummingbirds.

The pollinators come to drink the nectar, and while they drink, they brush their bodies against one of the the Lemon Lily's six **stamen** and the pollen sticks to them.

If the pollinators have visited other Lemon Lilies, they bring pollen from those Lilies with them. The pollen from the other Lilies goes into to the Lemon Lily's single **carpal** at the very center of the flower, and seeds start to form inside the flower!

If the flower isn't disturbed, the seeds ripen inside it. They fall to the ground and carried by the wind and water to a place by the creek where they will become Baby Lemon Lilies!

After the Lemon Lily makes its seeds, the part of the plant above the ground dries up, but the bulb under the ground is still alive. It sleeps through the winter under the snow, and in the spring it awakens and begins to grow again!



DID YOU KNOW THAT A LEMON LILY HAS TO BE AT LEAST THREE YEARS OLD BEFORE IT CAN MAKE ITS FIRST FLOWER!



WHERE LEMON LILIES LIVE

Lemon Lilies love to grow along streams. They need the moisture to grow and plenty of sunlight.

You can visit the Idyllwild Nature Center and see them growing along Lily Creek. If you visit in the summer, you can see them growing, blooming, and making their seeds.

DRAW A LEMON LILY IN ITS NATURAL HABITAT





FAQ

HERE'S A QUESTION LOTS OF PEOPLE ASK.
AS A LEMON LILY LEADER, YOU WILL HAVE
THE ANSWER!

Q: WHY CAN'T I PICK THE LEMON LILIES
AND TAKE THEM HOME? THEY ARE SO
BEAUTIFUL AND I REALLY WANT THEM.

A: WHEN YOU PICK A FLOWER, IT CAN'T
MAKE ITS SEEDS. IF IT CAN'T MAKE SEEDS,
THEN NO MORE BABY LEMON LILIES WOULD
BE BORN. IF NO MORE BABIES ARE BORN,
THE LEMON LILIES WILL DISAPPEAR
FOREVER.

HOW YOU CAN HELP THE LEMON LILIES AND BE A LEMON LILY LEADER ...

- ☐ Keep the environment clean and pick up litter
- ☐ Don't pollute the streams
- ☐ Tell the story of the Lemon Lilies to others
- ☐ Participate in a stream restoration at Nature Center
- ☐ Participate in a Lemon Lily restoration activity
- ☐ Learn more about Nature

LEMON LILY WORD SEARCH

Find the underlined words in the box on the next page.

The Lemon Lily is a threatened native flower that grows in Idyllwild.

Lemon Lily blooms have a lemon-vanilla scent.

They grow from bulbs.

The green foliage dies off in Autumn and returns in Spring.

They bloom in Summer.

Growing up to 5 feet tall, they can have 30 blooms!

Its scientific name is lilium parryi.

Gophers like to eat the bulbs and deer prefer the greens.

Y	L	I	L	I	U	M	P	A	R	R	Y	I	C	A
A	V	I	M	D	B	C	Y	E	L	L	O	W	N	X
M	N	L	N	W	E	D	A	O	N	A	T	I	V	E
C	M	I	E	O	I	E	T	M	I	P	S	T	L	D
G	O	A	M	M	Q	A	R	C	P	M	Y	S	I	R
O	U	Q	S	A	O	R	V	L	O	O	K	U	S	I
P	N	U	V	E	L	N	B	O	W	E	G	M	T	D
H	T	A	A	L	D	H	L	K	T	R	H	M	J	Y
E	A	I	N	G	G	B	J	I	A	L	R	E	L	L
R	I	L	I	A	T	R	E	E	L	M	I	R	N	L
S	N	S	L	E	A	D	E	R	S	Y	Y	O	P	W
T	L	B	L	J	N	A	E	T	R	T	M	W	I	I
X	A	N	A	T	U	R	E	R	D	E	S	L	N	L
R	A	R	E	R	H	K	F	O	L	I	A	G	E	D
S	B	L	U	B	I	L	J	S	T	R	E	A	M	S

DISCOVER THE NATURE CENTER!

Visit the Idyllwild County Park Nature Center and learn all about the local mountains!

Bring a picnic and spend the day there. There is a small fee to enter the park and dogs are allowed.

Map showing both park entrances

There are easy hiking trails that take you close to the creeks where the Lemon Lilies live. And if you come in the July, you can see the Lemon Lilies blooming!



LOTS OF PEOPLE LOVE NATURE AND THEY WOULD LOVE TO TEACH YOU MORE ABOUT IT!

WHEREVER YOU LIVE, THERE ARE PLACES YOU CAN GO. COUNTY AND STATE PARKS ARE GOOD PLACES TO START!

GO TO IDYLLWILDNATURECENTER.NET FOR INFORMATION ABOUT ACTIVITIES AND EVENTS

PLANTS AND ANIMALS IN THE YELLOW PINE FOREST

Idyllwild is located in a Yellow Pine Forest and there are lots of plants and animals who live together here.

TREES

There are spectacular trees here, and some are taller than some big city buildings. Some are hundreds of years old.

Draw a picture of each kind of tree and their leaves.
(Hint: some leaves are VERY thin!)

PINE

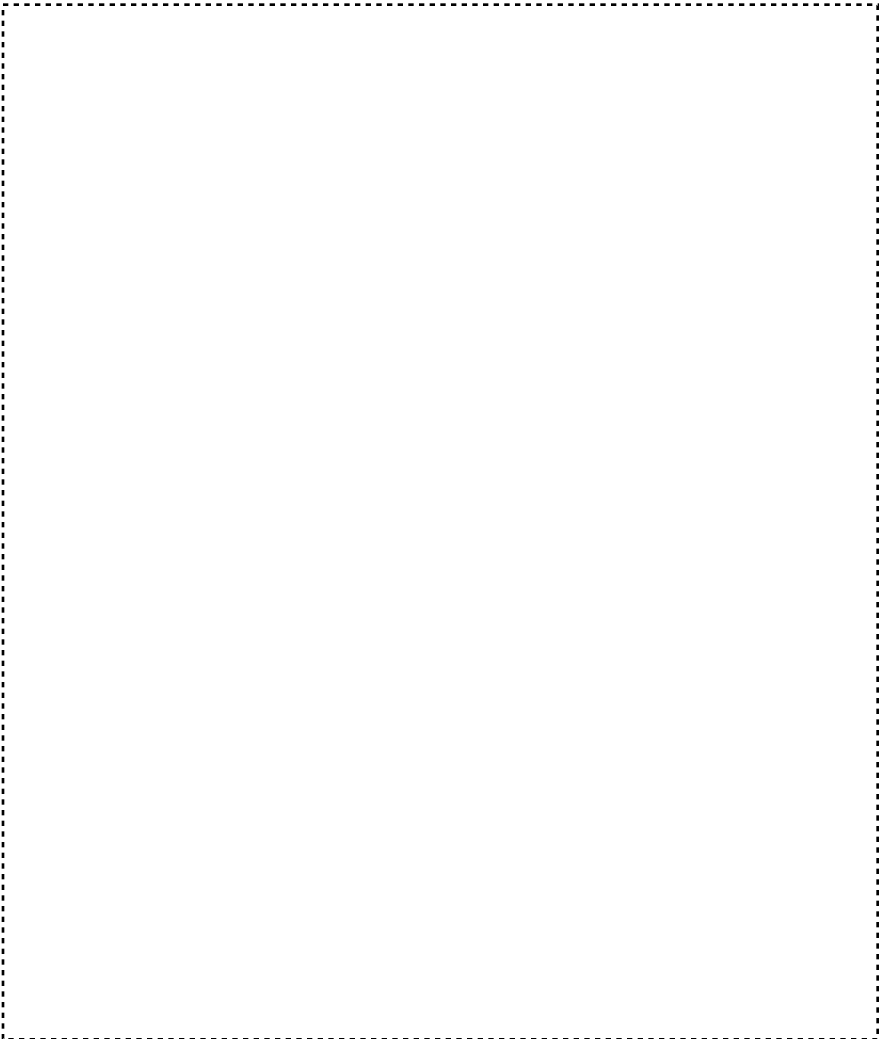
OAK

CEDAR

WILDFLOWERS

You already know about the Lemon Lily. And if you want to see beautiful wildflowers, come see the Nature Center gardens in the Spring and Summer! You will see beautiful pollinators, like hummingbirds.

Draw a picture of a wildflower and a pollinator





PLANTS NEED 3 THINGS TO GROW AND BE HAPPY? DO YOU KNOW WHAT THEY ARE?

1. FOOD (FROM THE SUN AND SOIL) AND CLEAN WATER
2. HELP FROM POLLINATORS TO MAKE THEIR SEEDS
3. SAFE PLACES FOR THEIR SEEDS TO TAKE ROOT AND GROW

LEARNING ABOUT THE PLANTS IN A YELLOW PINE FOREST

- ☐ The Nature Center exhibits have lots of plants in them. Which one is your favorite?
- ☐ Look at seeds under the microscope.
- ☐

THANK A TREE ...

For making oxygen for us to breathe
For sheltering and feeding forest animals

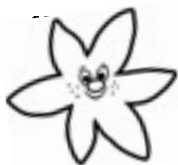
ANIMALS

LOTS of animals live in the Yellow Pine Forest and you will see most of them at the Nature Center.

LEARNING ABOUT THE ANIMALS IN A YELLOW PINE FOREST

- ☐ Learn more about a Mammal _____
- ☐ Learn more about a Bird _____
- ☐ Learn more about a Reptile _____
- ☐ Make a rubbing of some tracks

List at least two animals native to our mountains:
Write one thing you learned about them today:
What live animals did you see on your visit?



ANIMALS (INCLUDING PEOPLE) NEED 3 THINGS TO GROW AND BE HAPPY. DO YOU KNOW WHAT THEY ARE?

1. FOOD AND CLEAN WATER
2. A SAFE SHELTER
3. SAFE PLACES TO RAISE THEIR CHILDREN

WHO LIVES IN THE FOREST?

match the tracks

Deer

Raccoon

Cougar

Bobcat

CARING FOR THE ENVIRONMENT



Lemon Lily Leaders take care of the environment.
Circle 5 things that people have done to harm
the Lemon Lily's home



TAKE A HIKE!

It's fun to take a walk in nature and see and hear exciting things! But you can't see them or hear them unless you are quiet. Noise scares the animals who live here, and they will hide from you.

So if you want to see and hear animals while you hike:

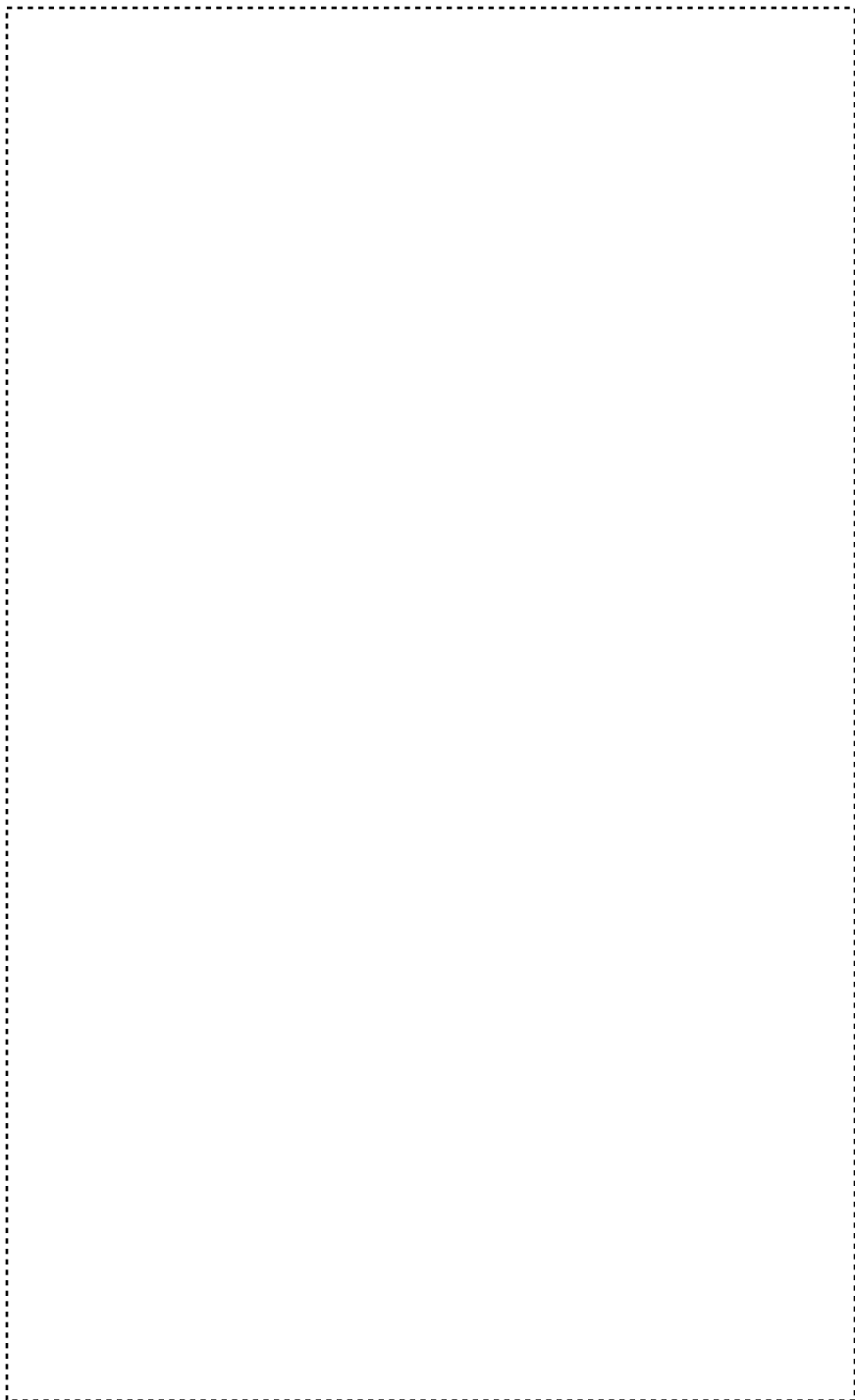
1. Be quiet
2. Blend into the woods: wear natural colors and walk softly. Relax your body as animals can easily detect tension.
3. Let animals be themselves. Give them plenty of space, use binoculars, wait quietly, and let them eat their natural foods.
4. Let the forest speak to you. Use all your senses to hear, smell, and see the amazing world around you.



BE SAFE WHEN YOU HIKE!

1. DON'T HIKE ALONE
2. TAKE FOOD AND WATER
3. DON'T LEAVE ANYTHING IN THE FOREST
4. MORE

DRAW OR WRITE ABOUT YOUR HIKE

A large rectangular area defined by a dashed line, intended for a child to draw or write about their hike. The box is empty and occupies most of the page below the title.

LEARN ABOUT HISTORY

NATIVE AMERICANS

Who used to live here?

Why did they come to the Idyllwild area?

What is interesting about the way they lived?

LOGGING DAYS

LEARN ABOUT GEOLOGY

DISPLAY OF BEAUTIFUL GEMSTONES FOUND IN THE MOUNTAINS

DISPLAY OF DIFFERENT LEVELS OF THE MOUNTAIN

A FUTURE IN THE WILD?

Have you ever wondered what you wanted to do when you grow up? Maybe be a park ranger? Naturalist? Botanist?

Get to know the people who work and volunteer at our local parks and Nature Center and learn more about careers in nature!

RESEARCH A JOB WORKING IN NATURE

You can research careers at the local library, Nature Center, or online.

What job did you research?

What sounds like fun about it?

ATTEND AN INTERPRETIVE PROGRAM

There are lots of guided walks, talks, and campfire programs you can attend.

Who led the group?

What was interesting about it?

LEAD A "GUIDED WALK"

Take your family or friends on a walk and point out things you recognize and know and things that you find interesting.

Where did you go?

What did you share?

INTERVIEW SOMEONE WHO WORKS IN NATURE

You could interview someone at the Nature Center or Ranger Station

Who did you interview and what is their job?

Why did they want to help the parks?

How did they become a volunteer or ranger?

What do they like most about their job?

What else do you want to know?

DISCOVER IDYLLWILD

There's lots you can see and do in Idyllwild!

Places to explore

Idyllwild Historical Society

Town Hall

Community Center

Strawberry Creek

Public Library

Art galleries throughout town

Idyllwild's Tree Monument

Idyllwild's Tree Monument was carved by a local artist, David Roy, using a chainsaw!

All the animals are natives and include squirrel, lizard, mountain lion, bear, eagle, wood peckers.

It is a work in progress and he adds more to it when he is inspired to create more.

He even carved himself onto the monument; did you see him?

RESOURCES

websites, etc.

ANSWERS

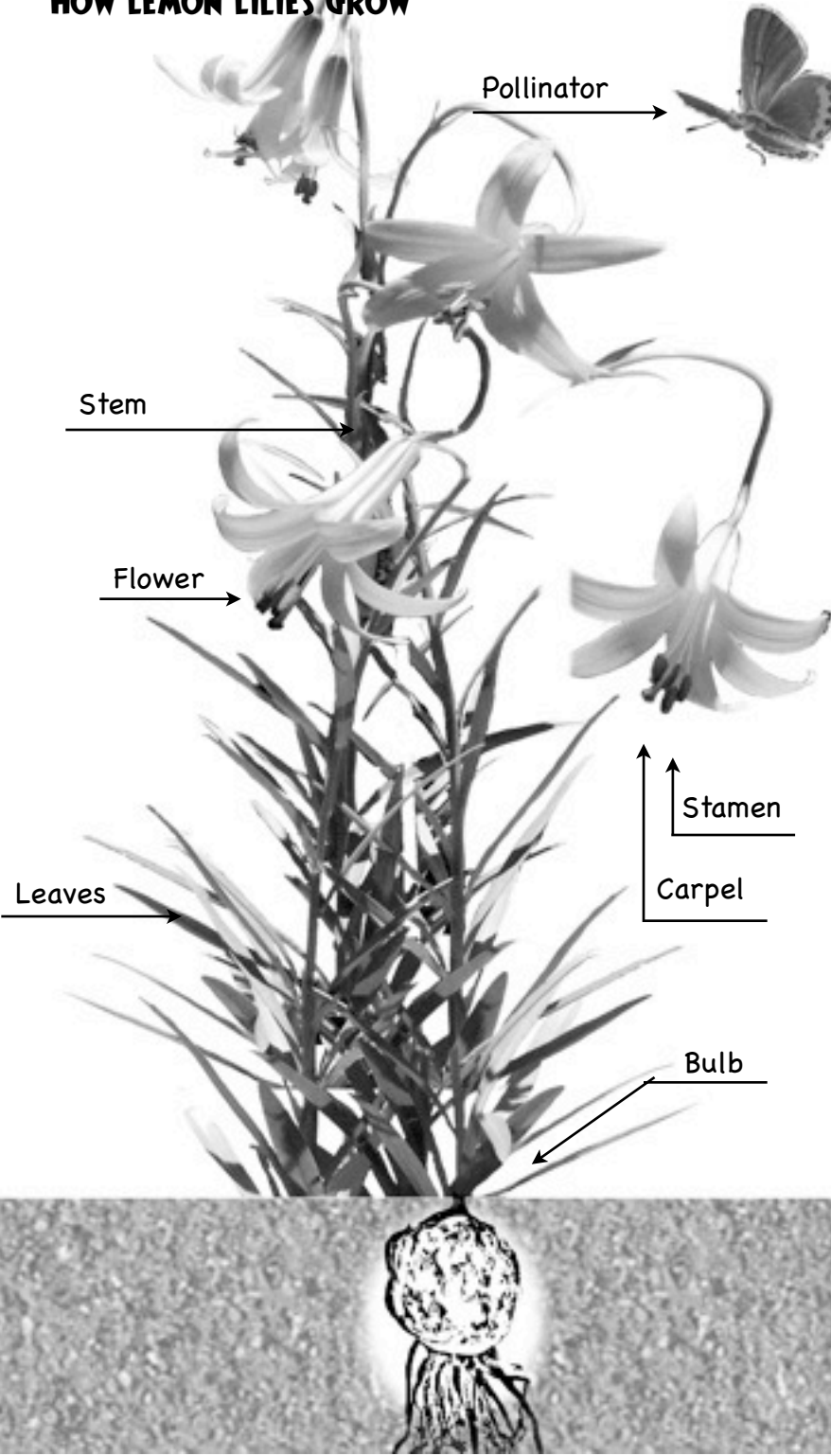
LEMON LILY WORD SEARCH

	L	I	L	I	U	M	P	A	R	R	Y	I		
				D										
		L			E				N	A	T	I	V	E
			E			E					S			
G				M			R			M		S		
O					O				O			U		I
P			V			N		O				M		D
H			A				L					M		Y
E			N			B		I				E		L
R			I						L			R		L
S			L							Y				W
			L											I
			A											L
							F	O	L	I	A	G	E	D
S	B	L	U	B										

CARING FOR THE ENVIRONMENT

Harmful things: Harming a tree by carving or attaching signs to it, polluting the creek by spilling things into it and putting trash in it, trash, baseball, picking the a lily.

HOW LEMON LILIES GROW





THANK YOU FOR BEING A LEMON LILY LEADER!

THROUGHOUT THIS ADVENTURE GUIDE, YOU'VE LEARNED ABOUT THE LEMON LILY AND IDYLLWILD. HOPEFULLY, YOU'VE GOTTEN TO SEE HOW SPECIAL THE WILD PLACES ARE ON OUR MOUNTAIN AND UNDERSTAND THAT WE ALL CAN HAVE A PART IN PROTECTING THEM.

IF YOU WOULD LIKE TO BE A PART OF SHARING THIS WISDOM AND APPRECIATION WITH OTHERS, YOU CAN TAKE THE PLEDGE TO BE A LEMON LILY LEADER!

AND THANKS TO ...

Lots of people are helping the Lemon Lilies!

This Lemon Lily Adventure Guide and Leadership program has been made possible through the support of the **LEMON LILY FESTIVAL COMMITTEE, THE FRIENDS OF THE SAN JACINTO MOUNTAIN COUNTY PARKS**, and donations from people dedicated to the survival of our local Lemon Lily.

The Lemon Lily Adventure Guide was written by **JULIE JOHNSON**, M.S., with additional content, illustrations and photos by **AVIANNA JONES**, Ph.D. Comic backgrounds © Cartoon Solutions.

For more information about the Lemon Lily Festival and restoration program, and additional resources for Lemon Lily Leaders, parents and teachers, please visit our website at

WWW.LEMONLILYFESTIVAL.COM

LEMON LILY LEADER PLEDGE

I PROMISE TO:

**SHARE MY WISDOM AND LOVE
OF THE LEMON LILY**

**TREAT NATURE & ALL LIVING CREATURES
WITH RESPECT & CARE**

**BE CURIOUS ABOUT THE WORLD
AROUND ME**

**FIND WAYS TO HELP TAKE CARE
OF THE EARTH**

SIGN YOUR NAME HERE

This would be a date sensitive flyer/insert into Adventure Guide.

THE LEMON LILY LEADERSHIP PROGRAM 2011

Our local lemon lily is in danger and needs your help to grow and bloom and thrive in Idyllwild! Become a Lemon Lily Leader as you explore nature and learn what you can do to make a difference for this little flower. Earn your way through the stages of leadership by completing the activities in this guide.

You'll find answers to the questions and activities by visiting the Idyllwild library and Historical Society Museum, touring the Nature Center, reading park information, and exploring Idyllwild's trails and shops.

**When you are finished,
bring your guide with a bag of trash or recyclables to:
a Nature Center Volunteer,
Park Ranger,
or the Lemon Lily Hoedown (Sat, July 16).**

Take your pledge and receive your Lemon Lily Leadership award.

Start your adventure today and take the Lemon Lily Leadership challenge!

Lemon Lily Leader Levels:

Friend: Complete 3 Activities

Earns \$3 gift card to Nature Center Shop

Champion: Complete 6 Activities

Earns LLL t-shirt & water bottle

Leader: Complete all 10 Activities

Earns 10 Essentials fanny pack